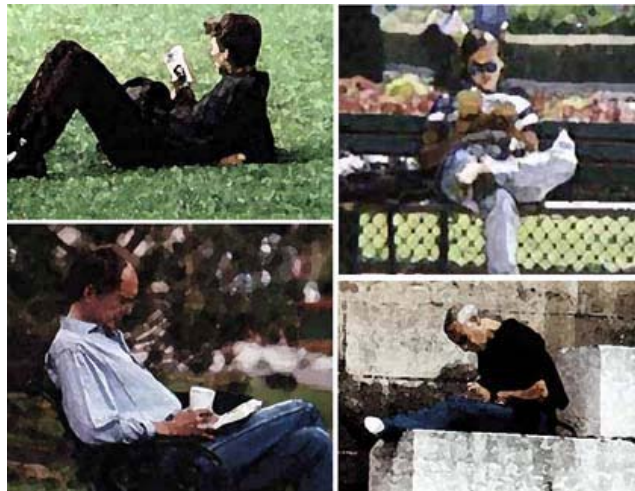




Central Library Building Programme

Burlington Public Library



prepared by

PETER HOSSACK Architect Inc.

in association with

MOFFAT KINOSHITA ARCHITECTS

August 2001



Central Library Building Programme

Burlington Public Library

August 2001

Table of Contents

Executive Summary

1.	Context for the Study	1
1.1	Terms of Reference	1
1.2	Methodology	2
2.	Community to be Served: History, Demographics	3
3.	Role in the Community	4
3.1	Burlington Public Library Values	4
3.2	Implications of Information Technologies	5
3.3	Service Parameters	7
4.	Building Design Parameters	9
4.1	Library Design Criteria	9
4.2	Measurement of Existing Library against Criteria	16
5.	Building Technical Parameters	22
5.1	Existing Mechanical System	22
5.2	Proposed Mech. Systems for New Addition	22
5.3	Existing Electrical System	23
5.4	Proposed Elect. Systems for New Addition	23
6.	Building a Renewed Central Library	25
6.1	Guiding Principles for Renovation and Expansion	25
6.2	Space Allocations in Central Library, 2001	26
6.3	Standards	26
6.4	Comparison with Similar Libraries	29
6.5	Planning for Future Expansions	29
7.	Identification of Functional Components	30
8.	Component Descriptions and Relationships	37
9.	Options for Space Allocation	53
9.1	General Space Allocation per Floor	53
9.2	Detailed Space Allocation by Component	56
10.	Exploratory Project Construction Budgets	58



Central Library Building Programme

Burlington Public Library

August 2001

Appendices

1.	List of Consultants	75
2.	Volume Equivalency Table	76
3.	Existing & Proposed Programme Component Areas Comparison Table	78
4.	Existing Floor Plans	79

Notes and References	82
-----------------------------	-----------